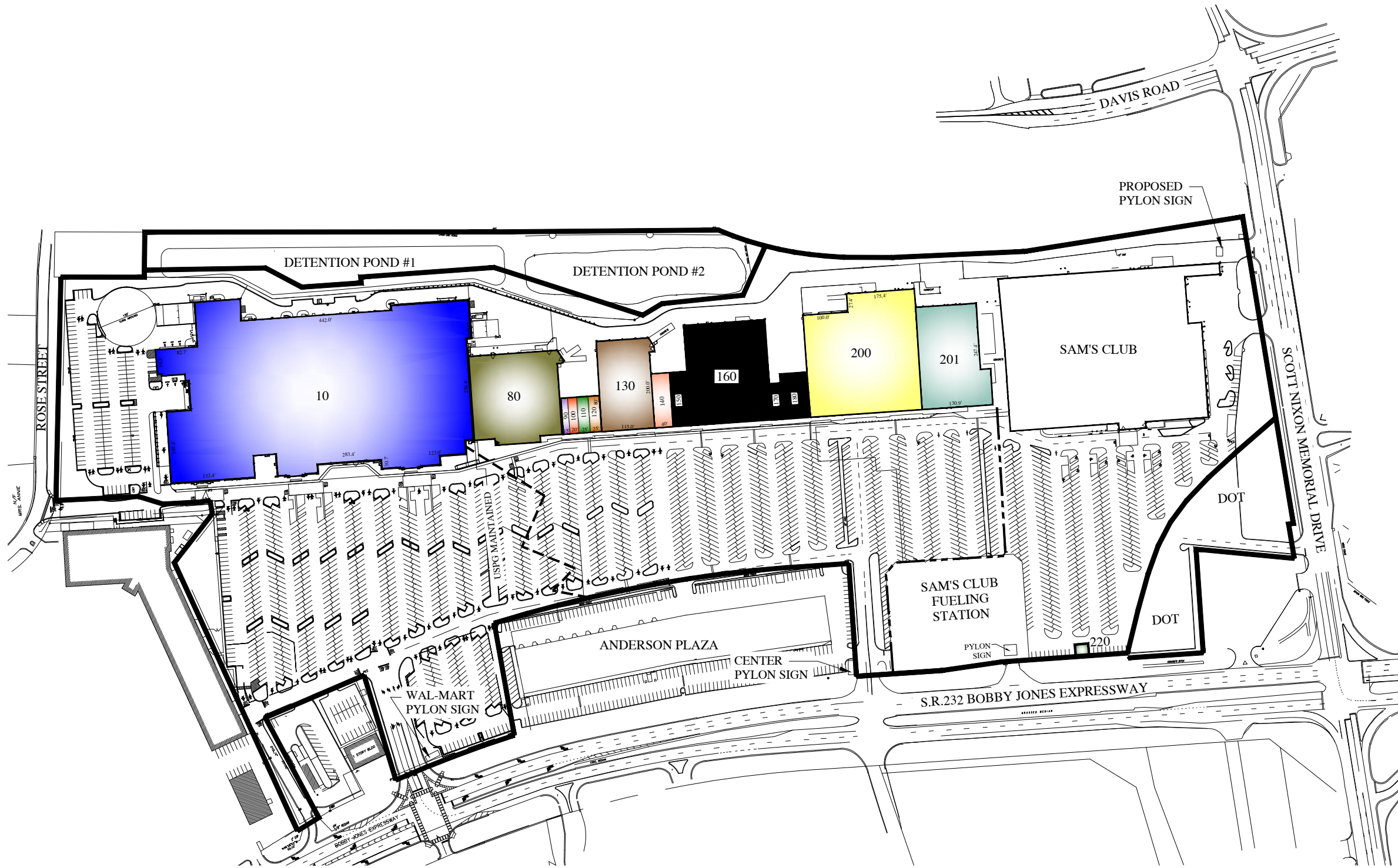
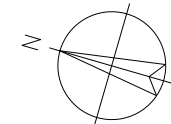


THE DESIGNATION AND LOCATION ON THIS SITE PLAN OF STORE UNIT SIZES, TENANT NAMES, AND OTHER INFORMATION ABOUT THE SHOPPING CENTER, ITS BUILDINGS, AND COMMON AREAS IS NOT A REPRESENTATION BY LANDLORD THAT SUCH CONDITIONS EXIST OR WILL CONTINUE TO EXIST THROUGHOUT ALL OR ANY PORTION OF THE TERM OF TENANT'S LEASE. THIS SITE PLAN AND OTHER INFORMATION CONTAINED HEREIN IS FOR MARKETING PURPOSES ONLY, EXCEPT AS SUCH MAY BE SPECIFICALLY INDICATED OTHERWISE IN TENANT'S LEASE.



SPACE	NAME	AREA	LAYOUT
10	WAL-MART	217,068 SF	653' x 329'
80	BEALL'S	36,000 SF	-
90	MR. DRYCLEAN	1,200 SF	15' x 80'
100	SALLY BEAUTY	1,600 SF	20' x 80'
110	LENDMARK FINANCIAL	2,000 SF	25' x 80'
120	GNC	2,000 SF	25' x 80'
130	GOLD'S GYM	23,000 SF	115' x 200'
140	CATO	4,800 SF	40' x 120'
150	AVAILABLE	4,800 SF	40' x 120'
160	AVAILABLE	39,960 SF	180' x 220'
170	AVAILABLE	2,000 SF	25' x 80'
180	AVAILABLE	6,000 SF	60' x 100'
200	GREAT DEALS ON FURNITURE	63,000 SF	-
201	TRACTOR SUPPLY CO.	22,500 SF	131'x247'



U.S. PROPERTIES GROUP, INC. 3665 FISHINGER BLVD. HILLIARD, OH. 43026		
LOCATION: VILLAGE PLAZA AUGUSTA, GA. RICHMOND COUNTY		
AC. 44.790	G.L.A. 530,427	DATE 7-1-11
PARKING: 2486 TOTAL SPACES (2441 STANDARD, 45 HANDICAP)		
DEVELOPED: 1988 REDEVELOPMENT: IN PROCESS		
SCALE: AS NOTED	CAD FILE NAME: VILLAGE PLAZA AUGUSTA	SHEET 1 OF 1